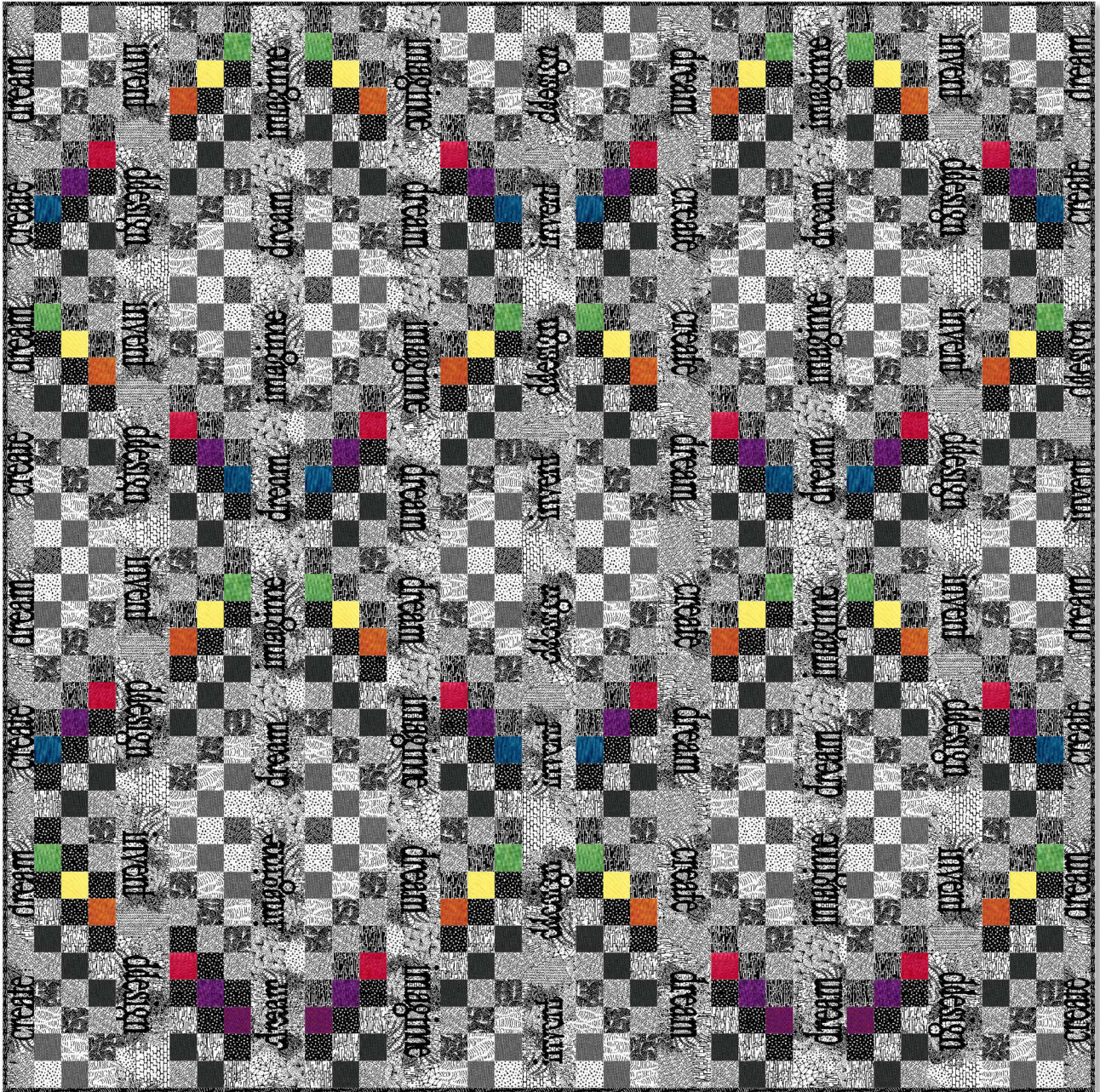


# Aura

Designed by Stacey Day

Featuring the Imagine collection by Another Point of View, Palettes by Marcia Derse and Artisan Cotton  
Size: 60" x 60"



Check [www.windhamfabrics.com](http://www.windhamfabrics.com) Free Project section to see if there are any pattern updates before you start your quilt project



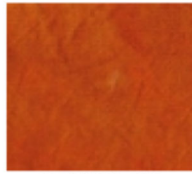
812 Jersey Ave ~ Jersey City, NJ 07310 ~ 201.659.0444 ~ FAX: 201.659.9719  
[www.windhamfabrics.com](http://www.windhamfabrics.com) email: [retail@windhamfabrics.com](mailto:retail@windhamfabrics.com)

# Aura

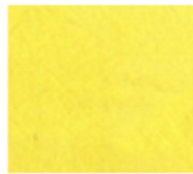
Page 2



37098-22



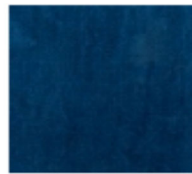
37098-19



37098-14



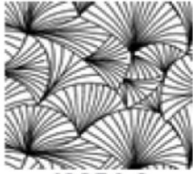
37098-36



37098-28



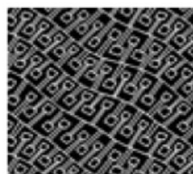
37098-25



40856-2



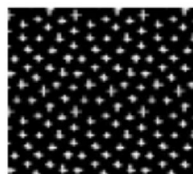
40853-X



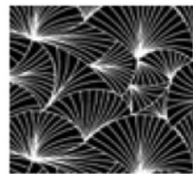
40854-1



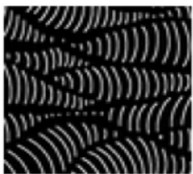
40854-2



40855-1



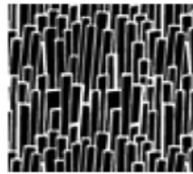
40856-1



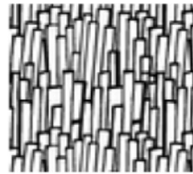
40857-1



40857-2



40858-1



40858-2



40171-1



40171-2

## Materials:

*Yardage is based on 42" wide fabric*

2 1/4 yards 40853-X Multi for sashing \*additional yardage included for fussy cutting

1/8 yard 40854-1 Black for blocks

5/8 yard 40854-2 White for blocks

1/2 yard 40855-1 Black for blocks

1/4 yard 40855-1 White for blocks

1/2 yard 40856-1 Black for blocks

1/2 yard 40857-1 Black for binding

1/2 yard 40857-2 White for blocks

1/2 yard 40858-1 Black for blocks

1/2 yard 40858-2 White for blocks

1/3 yard 40171-1 Charcoal White for blocks

1/3 yard 40171-2 Black Grey for blocks

1/3 yard 37098-14 Duckling for blocks

1/3 yard 37098-19 Pumpkin for blocks

1/3 yard 37098-22 Cardinal for blocks

1/3 yard 37098-25 Concord Grape for blocks

1/3 yard 37098-28 Dark Teal for blocks

1/3 yard 37098-36 Grass for blocks

4 yards 40856-2 White for backing



WINDHAM FABRICS

# Aura

Page 3

## Cutting

From the 40853-x Multi fussy cut:

12 Rectangles, 3 1/2"x 15 1/2" of the word pair "Dream Imagine"

12 Rectangles, 3 1/2"x 15 1/2" of the word pair "Invent Design"

4 Rectangles, 3 1/2"x 15 1/2" of the word pair "Create Dream"

8 Rectangles, 2"x 15 1/2" of the word pair "Create Dream"

From the 40854-1 Black cut:

1 strip, 2"x 42"

From the 40854-2 White cut:

9 strips, 2"x 42"

From the 40855-1 Black cut:

6 strips, 2"x 42"

From the 40855-2 White cut:

3 strips, 2"x 42"

From the 40856-1 Black cut:

7 strips, 2"x 42"

From the 40857-1 Black cut:

7 strips, 2 1/4"x 42" for binding

From the 40857-2 White cut:

6 strips, 2"x 42"

From the 40858-1 Black cut:

6 strips, 2"x 42"

From the 40858-2 White cut:

6 strips, 2"x 42"

From the 40171-1 Charcoal White cut:

5 strips, 2"x 42"

From the 40171-2 Black Grey cut:

5 strips, 2"x 42"

From **each** of the 37098-14 Duckling, 37098-19 Pumpkin, 37098-22 Cardinal, 37098-25 Concord Grape, 37098-28 Dark Teal, 37098-36 Grass cut:

1 strip, 2"x 42"



WINDHAM FABRICS

# Aura

**Instructions:**

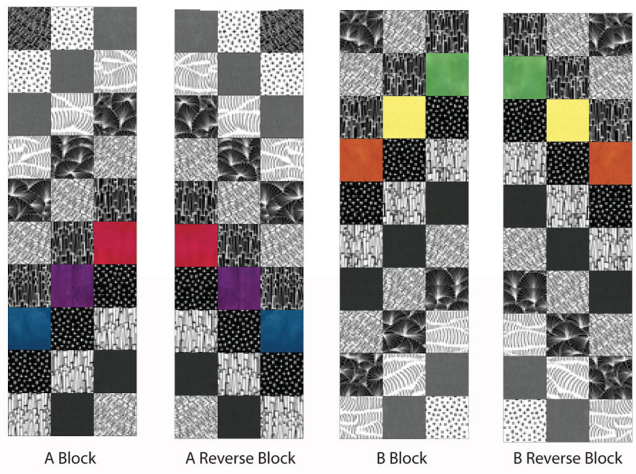
1. Sew the 2"x 42" strips into 6 strip sets, sewing strips in order as follows. Each strip set will be named for the accent color (37098 strips). Strip 1 will be at the top of the set, Strip 10 at the bottom:

	Strip 1	Strip 2	Strip 3	Strip 4	Strip 5	Strip 6	Strip 7	Strip 8	Strip 9	Strip 10
Set 1 DH Teal	40854-1 Black	40855-2 White	40171-1 Charcoal White	40857-2 White	40856-1 Black	40854-2 White	40858-1 Black	37098-28 Dark Teal	40855-1 Black	40858-2 White
Set 2 Grape	40855-2 White	40171-1 Charcoal White	40857-2 White	40856-1 Black	40854-2 White	40858-1 Black	37098-25 Concord Grape	40855-1 Black	40858-2 White	40171-2 Black Grey
Set 3 Cardinal	40171-1 Charcoal White	40857-2 White	40856-1 Black	40854-2 White	40858-1 Black	37098-22 Cardinal	40855-1 Black	40858-2 White	40171-2 Black Grey	40854-2 White
Set 4 Pumpkin	40856-1 Black	40854-2 White	40858-1 Black	37098-19 Pumpkin	40855-1 Black	40858-2 White	40171-2 Black Grey	40854-2 White	40856-1 Black	40857-2 White
Set 5 Duckling	40854-2 White	40858-1 Black	37098-14 Duckling	40855-1 Black	40858-2 White	40171-2 Black Grey	40854-2 White	40856-1 Black	40857-2 White	40171-1 Charcoal White
Set 6 Grass	40858-1 Black	37098-36 Grass	40855-1 Black	40858-2 White	40171-2 Black Grey	40854-2 White	40856-1 Black	40857-2 White	40171-1 Charcoal White	40855-2 White

2. From each strip set cut 16 pieces 2"x 15 1/2" (width of set) . Set the pieces aside for now.

3. Take 8 of the Set 1, Set 2, and Set 3 pieces and sew them together as shown to make 8 A Blocks. Take the remaining 8 pieces from Set 1, Set 2, and Set 3 and sew them together as shown to make 8 A Reverse Blocks. Press and set aside.

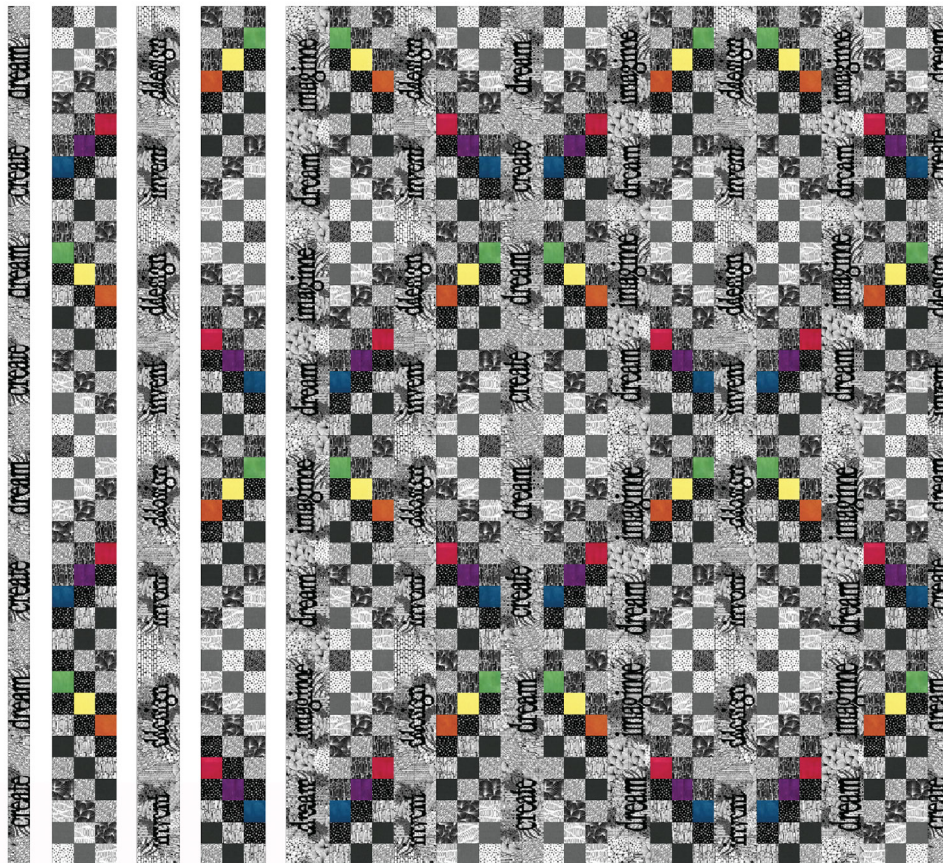
4. Take 8 of the Set 4, Set 5, and Set 6 blocks and sew them together as shown to make 8 B Blocks. Take the remaining 8 pieces from Set 4, Set 5, and Set 6 and sew them together as shown to make 8 B Reverse Blocks. Press and set aside.



# Aura

Page 5

5. Sew 4 of the 40853-x Multi 3 1/2"x 15 1/5" rectangles together, matching word pairs and aligning them so they all read in the same direction, to make the vertical sashes. Make 3 of "Dream Imagine", 3 of "Invent Design", and 1 of "Create Dream".
6. Sew 4 of the 40853-X Multi 2"x 15 1/2" rectangles together to make the vertical outside borders, aligning the words so they are all reading in the same direction. Make 2 total of "Create Dream".
7. Sew the A, A Reverse, B, and B reverse blocks together into rows as shown, paying close attention to the orientation and placement of the blocks. Sew the rows together with a 3 1/2" vertical word sash in between each to make the quilt top. Sew the 2" vertical outside borders to either side of the quilt top.
8. Layer the quilt top with batting and backing; baste. Quilt as desired. Using the 40857-1 Black 2 1/4" wide binding strips, sew around the quilt top. Turn the binding to the back and secure in place by hand or machine. Label and enjoy!



Be sure to visit [www.windhamfabrics.com](http://www.windhamfabrics.com) to see the complete collection and to download this and other Free Projects